

**PROJECT A: STEAM TO NATURAL GAS CONVERSION**  
**Thursday, August 6, 2020**

**Overall Status:** Project is on schedule to be complete at the end of September 2020. We continue to monitor the overall schedule very closely with the contractor.

The GC, Phipps, continues to work diligently to have hot water on by the start of classes on August 17; the only location that may not meet this date is the West wing of Science and Cherry Creek due to late meter installations by Xcel Energy. Currently the date may be as late as Thursday, August 27 for hot water in the West wing, but Phipps continues to work to improve that date.

Xcel's meters have been arriving over the last 2 weeks; Xcel's meter shop's schedule has been slipping, causing delays in the individualized meters being built for some of the AHEC buildings. We are now confident of hitting the August 17 date for restoring hot water for all but West Science and Cherry Creek; some buildings may have hot water earlier or later based on meter installations and we will highlight those dates on the building-by-building schedule below as they get updated.

Building heat is not scheduled to be back on campus-wide until mid-September, and normally in Colorado we don't need heat until sometime in October. The contractor will have the ability to heat the buildings if we have forecasted earlier cold temperatures. Heat may be on at the earlier dates shown, but the entire system will be going through commissioning and testing through mid-Sept.

Xcel work to install gas lines is complete except for hardscape repairs. Hardscape repairs have been completed except in front of the Science Building, which will happen sometime in August due to Phipps being in the area with other work now.

Happening next week, by Building:

**Tivoli Commons:**

- After further investigation and additional excavation it turns out Xcel did bore through a campus irrigation mainline near the Quad. Repairs have begun and will take a couple of weeks.

**Boulder Creek:**

A. This Week/Next Week:

- Xcel's meter installation delayed until Friday, August 14; Phipps will work tirelessly to have hot water on Monday, August 17.

B. Upcoming:

- On-going finishes to Mechanical Room.

No Steam / No Heat	No Hot Water	Boiler Delivery	Hot Water Returns	Heating Sys Active	Building Complete
May 18	May 18	June 2	August 17	August 31*	Sept. 20

**\*Heating will be possible, but commissioning and testing will go on through September.**

C. Impacts:

- Contractors are to utilize scaffold stair tower on north side of building (Will be torn down week of August 21).
- No heat and no hot water in building as noted above.
- Xcel has pulled the gas meter so there is no gas to the building through mid-August.

**Plaza:**

A. This week

- Gas meter installed!
- Repairs to water-damaged rooms complete.

B. Next week:

- Continued work on interior landing from Penthouse to 3<sup>rd</sup> Floor, painting (work will go through mid-August)
- Continue installation of exterior metal panels on boiler room structure thru August 14.
- Pump start-up and water flow testing Wednesday, August 5 and continuing for 4 days (no impact).

C. Upcoming:

- Installation of new metal stair from 3<sup>rd</sup> floor to Penthouse (thru August).

No Steam / No Heat	No Hot Water	Boiler Delivery	<del>Hot Water Returns</del>	Heating Sys Active	Building Complete
May 13	May 13	June 10	<del>August 17</del>	August 31*	Sept. 18

**\*Heating will be possible, but commissioning and testing will go on through September.**

**Note: Plaza Health Center has electric hot water heaters and will not experience a hot water outage.**

D. Impacts:

- Contractors are to utilize scaffold stair tower on east side of building for Boiler Penthouse work thru August 21.
- No heat as noted above.

**PE:**

A. Next week:

- Continued install of exterior metal panels on new Penthouse Mechanical Room thru August 14.
- Permanent repairs due to roof leak to PE 215 and 209 complete.
- Water leak in PE 206, ceiling tile has been replaced.

B. Upcoming:

- Continue work on the boiler room/penthouse.
- Installation of new stair, currently in manufacturing; mid-August install.

Campus North

No Steam / No Heat	No Hot Water	Boiler Delivery	Hot Water Is ON!!!	Heating Sys Active	Building Complete
May 12	May 7	June 10	ON ON ON	August 31 *	Sep. 17

**\*Heating will be possible, but commissioning and testing will go on through September.**

**C. Impacts:**

- Contractors are to utilize scaffold stair tower on south side of building for Boiler Penthouse work.
- Sidewalk damaged during gas line installation on the south side of PE in Lawrence Way will be removed and replaced so loud demolition activities will be occurring over next couple of weeks.

**Arts:**

**A. Next week:**

- Only small barricade at Mechanical Room remains in hallway, until Mid-August.
- New gas meter installed.

**B. Upcoming:**

- Continue installation of Boilers, piping and equipment in the Mechanical Room.
- Anticipated August 5 pump start-up for water flows; 4 days of testing.
- Natural gas to kiln room has been restored; AHEC Plumbing will test with individual instructors.

No Steam / No Heat	No Hot Water	Boiler Delivery	Hot Water Returns	Heating Sys Active	Building Complete
May 18	May 18	June 10	August 14	August 31*	Sept. 11

**\*Heating will be possible, but commissioning and testing will go on through September.**

**C. Impacts:**

- No heat and no hot water as noted above.
- Majority of work is concentrated in the northeast corner of the building.

**Central Classroom:**

**A. Next week:**

- Continue installation of piping in the Mechanical Room.
- Installation of ceiling tile in office 106N (contractor will coordinate with occupant.).

**B. Upcoming:**

- Anticipated gas meter installation August 11.
- Anticipated pump start-up and water flows on August 12; boiler start-up August 19.

No Steam / No Heat	No Hot Water	Boiler Delivery	Hot Water Returns	Heating Sys Active	Building Complete
May 18	May 18	June 10	August 17	August 31*	Sep. 14

**\*Heating will be possible, but commissioning and testing will go on through September.**

C. Impacts:

- No heat and no hot water as noted above.

**West Classroom:**

A. Next week:

- Pipe chase/shaft being built from first floor to roof complete.
- Hallway work continues thru August 10.

B. Upcoming:

- Anticipating start-up of pumps and water flow testing August 11
- Boiler start-up starts August 17.

No Steam / No Heat	No Hot Water	Boiler Delivery	Hot Water Returns	Heating Sys Active	Building Complete
May 26	May 26	June 10	August 17	August 31*	Sept. 21

**\*Heating will be possible, but commissioning and testing will go on through September.**

C. Impacts:

- No heat and no hot water as noted above.
  - WC 243 Closet conversion complete.
  - 1<sup>st</sup> Floor office 026B - Complete.

**Cherry Creek:**

A. Next Week:

- Anticipating Xcel gas meter installation August 18.
- Work in 3<sup>rd</sup> floor hallway thru August 10.

B. Upcoming:

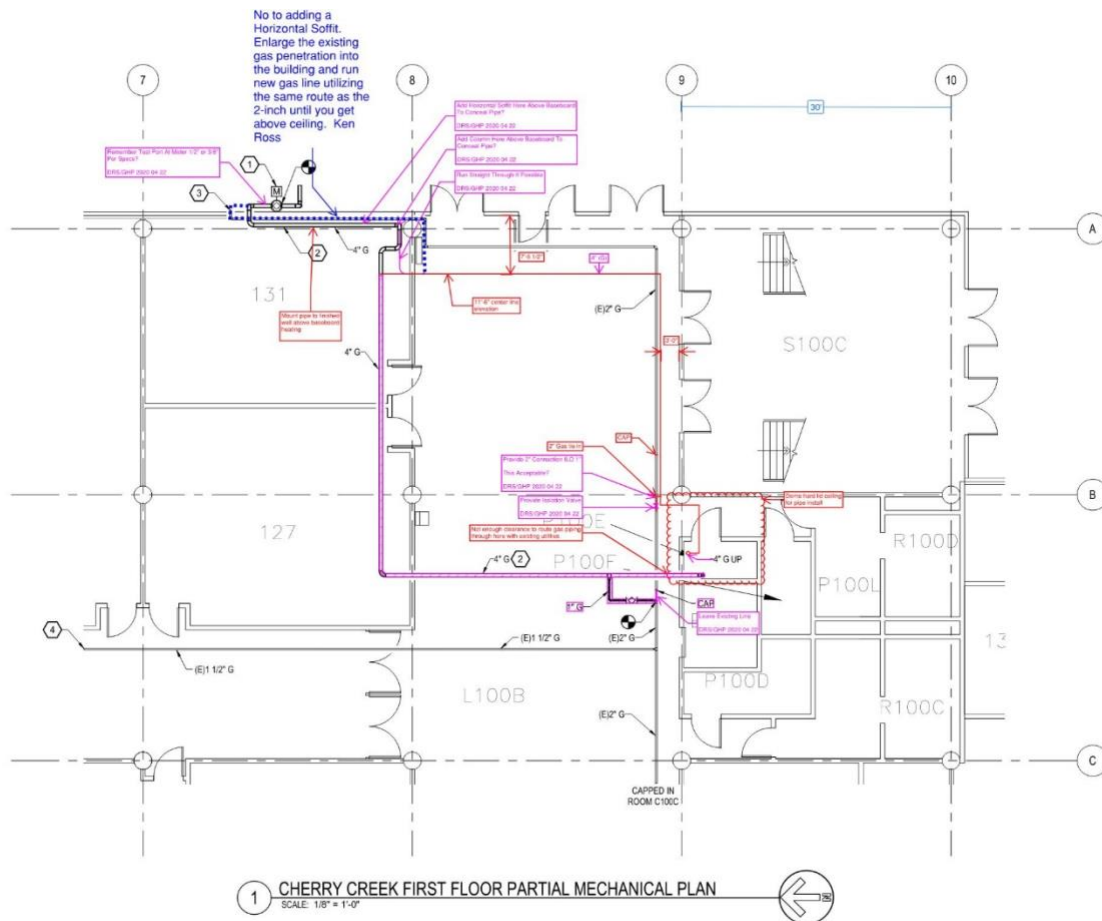
- Hot water back on by August 24 (working for earlier if Xcel delivers meter earlier).

No Steam / No Heat	No Hot Water	Boiler Delivery	Hot Water Returns	Heating Sys Active	Building Complete
May 19	May 19	June 29	August 24	August 31*	Sept. 29

**\*Heating will be possible, but commissioning and testing will go on through September.**

C. Impacts:

- No heat and no hot water as noted above.
- Gas piping will run from the east side of the building into the center of the building and up from the first floor to the third floor. As a result there will be some work in the main lobby area on the east side of the building.



## Science:

### A. Next week:

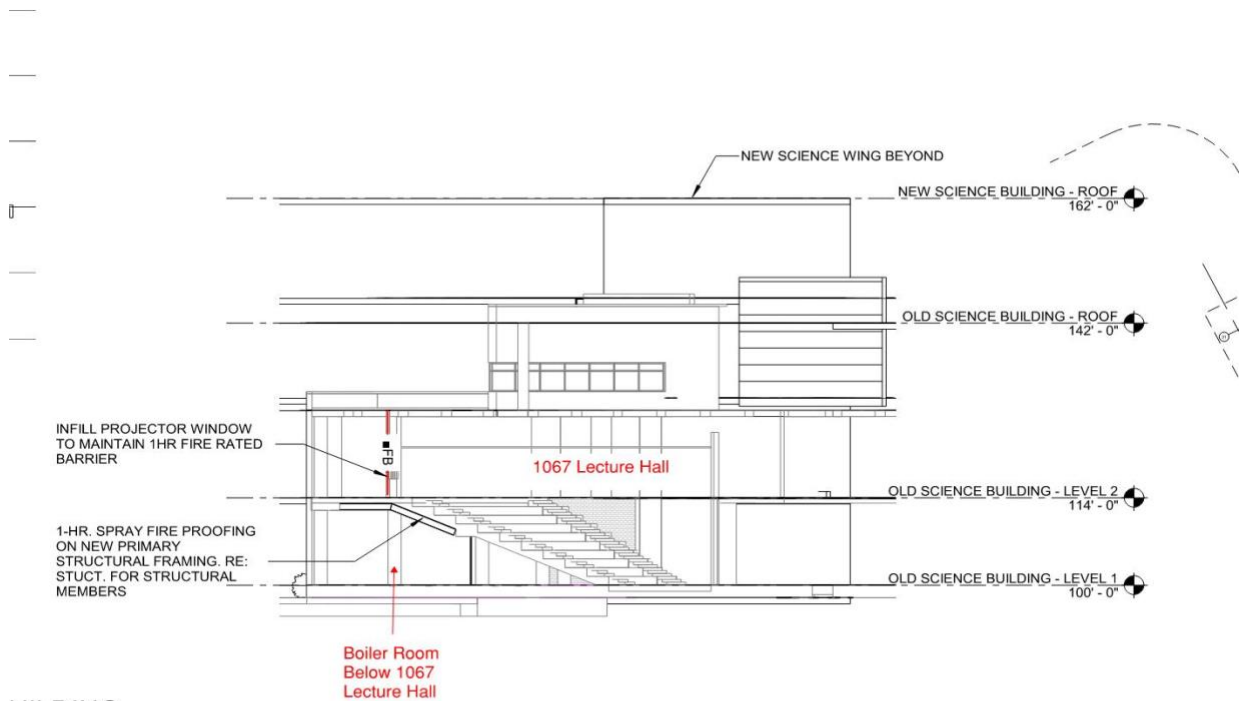
- Exterior trenching between wings of building continues; Will effect ingress/egress from the north to the main atrium butterfly area. Way finding signage showing entry/exits and barriers will be installed at doors and hallways.(Completion date: August 14)
- West wing north hallway corridor – piping complete; new ceiling complete; will be a small area that remains barricaded until gas can be tied in.
- Continue installation of piping in the Mechanical Room.
- Concrete exterior stairs poured; measuring for railings for additional exit out of Mechanical room; railing delivered by end of August.
- Finish ceiling work in gender neutral bathrooms – complete by August 7, back in service Monday, August 10.
- Vivarium work continues as worked out with stakeholders thru August 21.

### B. Upcoming:

- Anticipated Xcel gas meter installation August 13.
- 3-day gas outage effecting Bunsen burners after meter set; exact dates to be determined and will be communicated to labs. Working to schedule this for Friday afternoon/Saturday; awaiting final lab/class schedule for Fall.

No Steam / No Heat	No Hot Water	Boiler Delivery		Hot Water Returns	Heating Sys Active	Building Complete
June 4	May 26	June 10		Aug. 27 - WEST	August 31*	Sept. 29
<p>Note: Vivarium 180 degree water need will NOT be affected one heat exchanger will be intact and not be removed until boilers are operational.</p>						

\*Heating will be possible, but commissioning and testing will go on through September.



BUILDING -  
COMPLIANCE  
EL 01


5 CODE COMPLIANCE SECTION  
1/16" = 1'-0"

ROOM - 1067A / A06;  
PROJECTION RM / P  
SCOPE:  
CONVERT PROJECT  
MECHANICAL SPACE


### C. Impacts:


- The Science air handling unit has been shut down that provides tempered (cool) air to the 1067 Lecture Hall.
- No heat and no hot water as noted above.
- North corridor of Old Science will be under construction to allow pipe installation until August 7.
- Hot water piping from Old Science to New Science will cause the main entrance on the north side of the building to be closed thru approximately August 14.
- Two Gender Neutral Restrooms on 1<sup>st</sup> Floor will be back in service Monday, August 10.
- Lots and lots of noisy work outside and surrounding the projection booth.


# SCIENCE PUBLIC SAFETY BARRIER AND WAYFINDING PLAN 7-6 TO 8-14


 = AREA NOT ACCESSIBLE TO PUBLIC 7-6 TO 8-14

 = 4' SAFETY PANEL BARRIER WITH SIGN "HALLWAY CLOSED - DETOUR" WITH DIRECTIONAL ARROW

 = 6' CHAIN LINK FENCE WITH EMERGENCY EGRESS SIGNAGE AND ARROWS AS NEEDED

 = PUBLIC ACCESS ROUTE

 = EMERGENCY EXIT ROUTE (OPEN TO PUBLIC ONLY IN EMERGENCIES)

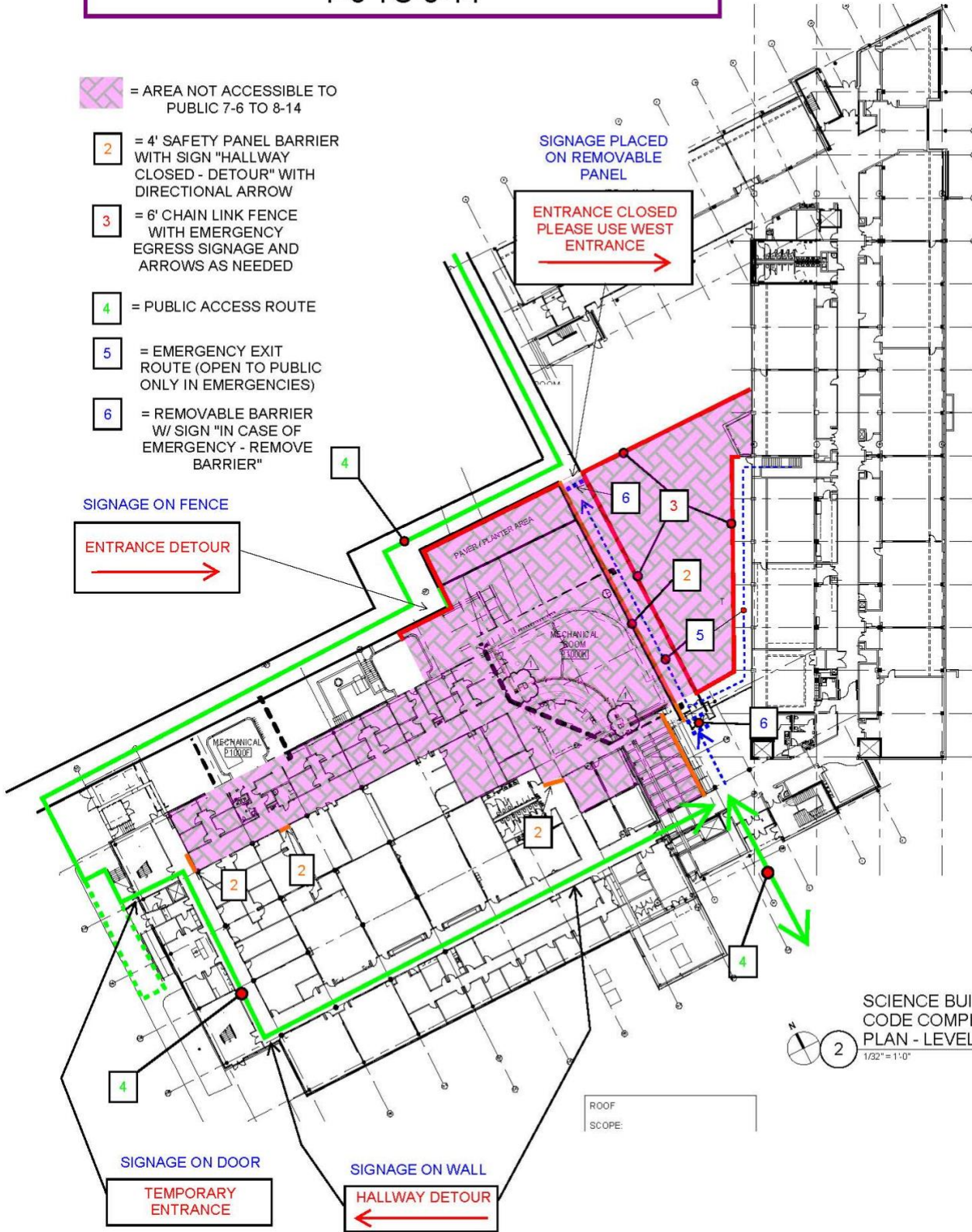
 = REMOVABLE BARRIER W/ SIGN "IN CASE OF EMERGENCY - REMOVE BARRIER"

SIGNAGE ON FENCE

ENTRANCE DETOUR  


SIGNAGE PLACED ON REMOVABLE PANEL

ENTRANCE CLOSED PLEASE USE WEST ENTRANCE  

INFILL PROJECT TO MAINTAIN BARRIER

1-HR. SPRAY F ON NEW PRIM STRUCT. FOR S MEMBERS

SCIENCE BUILDING -  
CODE COMPLIANCE  
PLAN - LEVEL 01



ROOF  
SCOPE: