

**PROJECT A: STEAM TO NATURAL GAS CONVERSION**  
**Wednesday, July 8, 2020**

**Overall Status:** Project is on schedule to be complete at the end of September 2020. We continue to monitor the overall schedule very closely with the contractor.

The pump manufacturer has notified the contractor that due to Covid-19 they have had difficulty getting wearing bearings for their pumps and that this will delay pump deliveries to Arts, Central, West, and Plaza into mid-July. The contractor is evaluating the impacts and will issue an updated schedule the week of July 13, hoping they can still meet mid-August dates.

The GC, Phipps, is working diligently to have hot water on by the start of classes on August 17. Unfortunately there have been some issues with getting gas meters released and getting gas hookups to the buildings are critical to completing the project. GH Phipps, AHEC and Xcel are working through the issues. Based upon these extenuating circumstances the project will move toward hitting the August 17 date for restoring hot water to the critical areas in the affected buildings instead of providing specific dates that may change week to week due to issues or delays.

Building heat is not scheduled to be back on campus-wide until mid-September, and normally in Colorado we don't need heat until sometime in October. The contractor will have the ability to heat the buildings if we have forecasted earlier cold temperatures. Heat may be on at the earlier dates shown, but the entire system will be going through commissioning and testing through mid-Sept.

Xcel work to install gas lines is complete except for hardscape repairs. Hardscape repairs have been completed except in front of the Science Building, which will happen sometime in late July due to Phipps being in the area with other work now.

Happening next week, by Building:

**Tivoli Commons:**

- After further investigation and additional excavation it turns out Xcel did bore through a campus irrigation mainline near the Quad. Repairs are underway.

**Boulder Creek:**

A. Next Week:

- Continue installation of Boilers, piping and equipment in the Penthouse Mechanical Room.

B. Upcoming:

- Gas line installation.

No Steam / No Heat	No Hot Water	Boiler Delivery	Hot Water Returns	Heating Sys Active	Building Complete
May 18	May 18	June 2	August 17	August 31*	Sept. 20

**\*Heating will be possible, but commissioning and testing will go on through September.**

C. Impacts:

- Contractors are to utilize scaffold stair tower on north side of building.
- No heat and no hot water in building as noted above.
- Xcel has pulled the gas meter so there is no gas to the building through late July.

**Plaza:**

A. Next week:

- Continued installation of boilers and associated equipment.
- Continued work on interior landing from Penthouse to 3<sup>rd</sup> Floor (work will go through mid-August)
- Monday, June 29: Began repairs to water damaged office 220; starting with drywall and then moving to the ceiling; work will continue through July.
- Continued installation of the ceiling grid in the Level 3 corridor as shown below.
- Begin installation of exterior metal panels on boiler room structure.
- Electrical Shut-down Thursday, July 16 and Friday July 17 that will effect 3<sup>rd</sup> floor outlets and lights, including all 3<sup>rd</sup> floor classrooms and offices. (Note HVAC will continue running during this shut-down.)

B. Upcoming:

- New gas meter from Xcel – date up in the air; awaiting Xcel meter release.

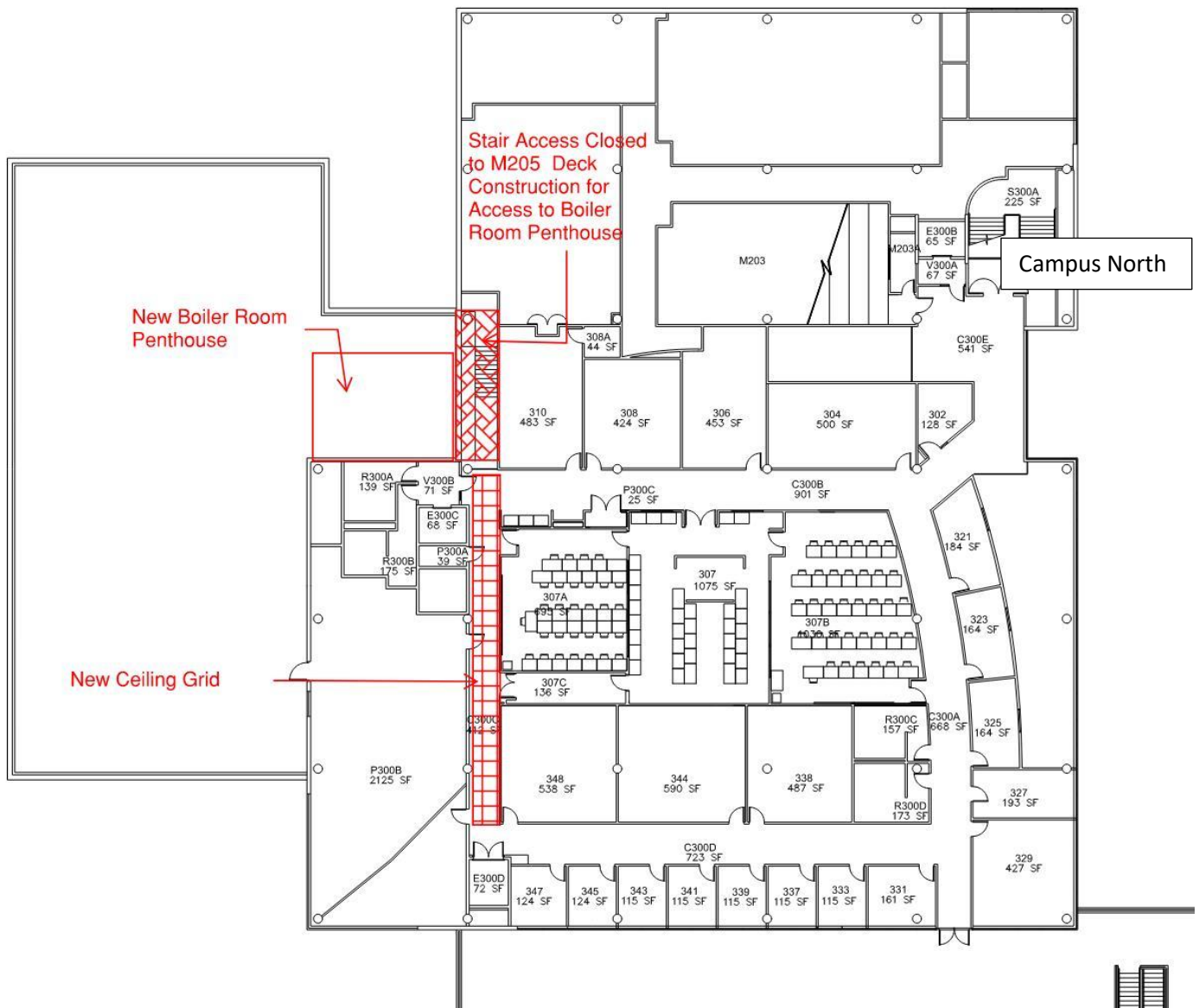
No Steam / No Heat	No Hot Water	Boiler Delivery	Hot Water Returns	Heating Sys Active	Building Complete
May 13	May 13	June 10	August 17	August 31*	Sept. 18

**\*Heating will be possible, but commissioning and testing will go on through September.**

**Note: Plaza Health Center has electric hot water heaters and will not experience a hot water outage.**

C. Impacts:

- Contractors are to utilize scaffold stair tower on east side of building for Boiler Penthouse work.
- No heat and no hot water as noted above.



**PE:**

**A. This week:**

- Whole Building Electrical outage Friday, July 10 from 3 pm to 6 pm. (There will be no HVAC during this period.)

**B. Next week:**

- Continue installation of Boilers, piping and equipment in the Penthouse Mechanical Room.
- Gas outage continues
- New gas meter from Xcel – date up in the air; awaiting Xcel meter release.
- Install exterior metal panels on new Penthouse Mechanical Room.
- Begin permanent repairs to PE 215 and 209 drywall and paint due to roof leak.

C. Upcoming:

- Continue work on the boiler room/penthouse.
- Boiler installation work continues.
- Gas meter installation.

No Steam / No Heat	No Hot Water	Boiler Delivery	Hot Water Returns	Heating Sys Active	Building Complete
May 12	May 7	June 10	August 17	August 31 *	Sep. 17

**\*Heating will be possible, but commissioning and testing will go on through September.**

C. Impacts:

- Natural gas has been shut down to the building. (If hot water is needed during this period, there is a work around that can be done if necessary.)
- Contractors are to utilize scaffold stair tower on south side of building for Boiler Penthouse work.
- Sidewalk damaged during gas line installation on the south side of PE in Lawrence Way will be removed and replaced so loud demolition activities will be occurring next week.

**Arts:**

A. Next week:

- Continue installation of Boilers, piping and equipment in the Mechanical Room.
- Begin installing light fixtures and ceiling tiles in northeast lobby (thru early August).
- Barriers and signage are up at the Northeast entry of Arts, directing people where to enter/exit the building.
- Exterior brick patching will begin week of July 13

B. Upcoming:

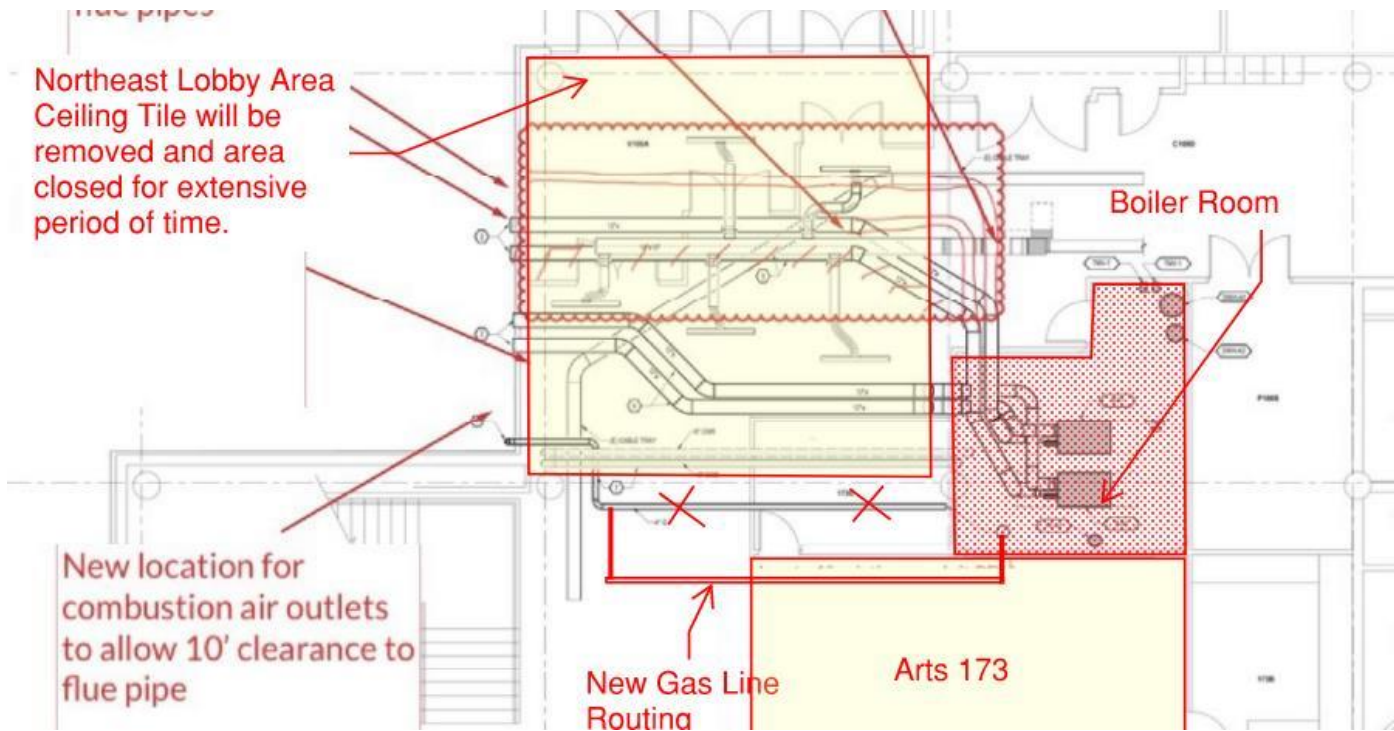
- Continue installation of Boilers, piping and equipment in the Mechanical Room.
- Gas meter installation.

No Steam / No Heat	No Hot Water	Boiler Delivery	Hot Water Returns	Heating Sys Active	Building Complete
May 18	May 18	June 10	August 17	August 31*	Sept. 11

**\*Heating will be possible, but commissioning and testing will go on through September.**

C. Impacts:

- No heat and no hot water as noted above.
- Majority of work is concentrated in the northeast corner of the building.
- No gas to Arts Kiln Room



**Central Classroom:**

A. Next week:

- Continue installation of Boilers, piping and equipment in the Mechanical Room.
- Continued installation of insulation in south wall of Central Classroom 101.
- Whole Building electrical shut down for 20 minutes from 12: 30 pm – 12: 50 pm, Tuesday, July 14, being coordinated with Metro IT.

B. Upcoming:

- Gas meter installation.
- Week of July 20: paint gas line on roof.

No Steam / No Heat	No Hot Water	Boiler Delivery	Hot Water Returns	Heating Sys Active	Building Complete
May 18	May 18	June 10	August 17	August 31*	Sep. 14

**\*Heating will be possible, but commissioning and testing will go on through September.**

C. Impacts:

- No heat and no hot water as noted above.

**West Classroom:**

A. Next week:

- Continue installation of Boilers, piping and equipment in the Mechanical Room.
- Installation of gas line from mechanical room to roof (thru August).
- Pipe chase/shaft being built from first floor to roof (thru August).
- Close 1<sup>st</sup> floor restrooms (both Men's R100C and Women's R100D) to seal penetrations.

B. Upcoming:

- Air Handler shut down dates TBD

No Steam / No Heat	No Hot Water	Boiler Delivery	Hot Water Returns	Heating Sys Active	Building Complete
May 26	May 26	June 10	August 17	August 31*	Sept. 21

**\*Heating will be possible, but commissioning and testing will go on through September.**

C. Impacts:

- No heat and no hot water as noted above.
- WC 243 Closet conversion into flue chase thru August 7 (confirmed with Saima Reece and coordinated where any returning employees can work during this installation)
- 1<sup>st</sup> Floor office 026B - ongoing above ceiling work thru August 7
- 2<sup>nd</sup> floor hall next to office 241B - on going above ceiling work thru August 7

**Cherry Creek:**

A. Next week:

- Begin installation of boilers and associated equipment.
- Install gas line thru east entry lobby thru July 24.
- Completing ceiling tile installation and drywall patching.

B. Upcoming:

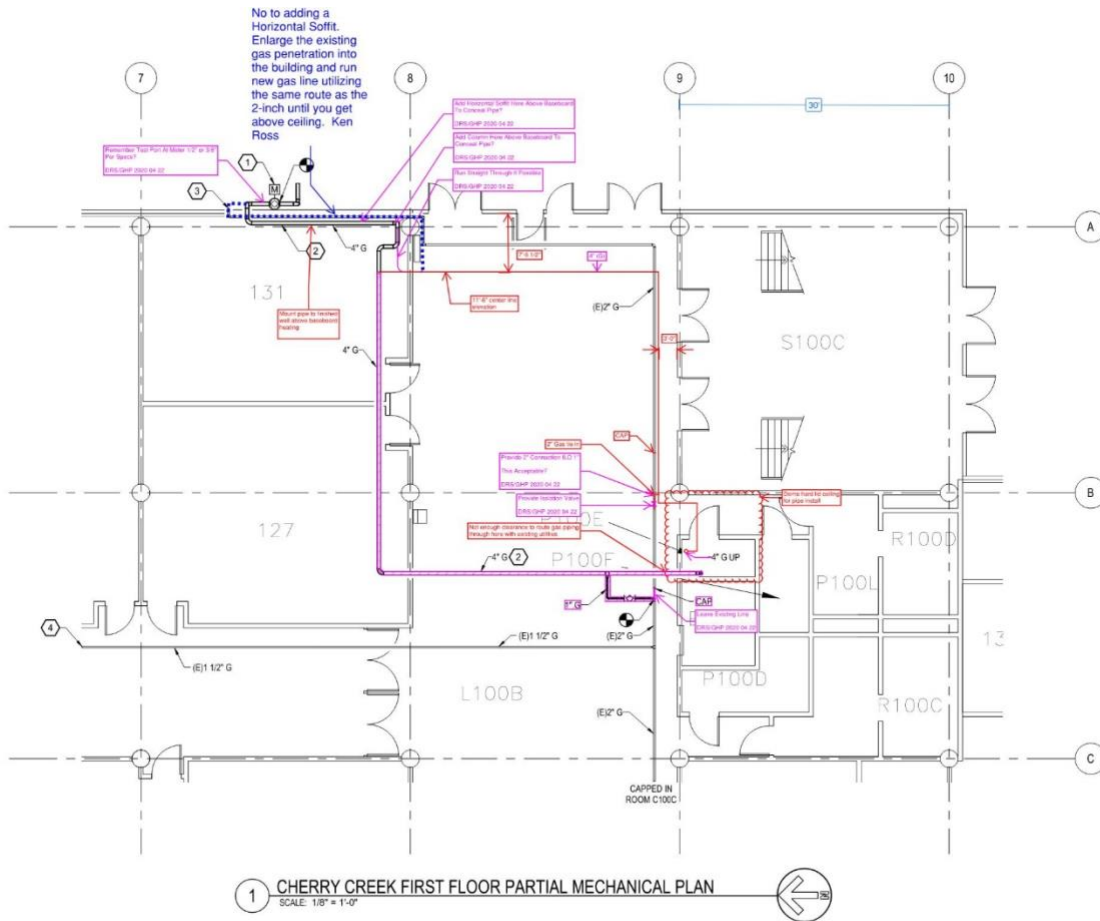
- Mid-July shut down of air handling units – NO HVAC Monday, July 27 through Friday, July 31.
- Full Building electrical outage on Tuesday, July 21 from 6 am to 9 am and Wednesday, July 22 from noon to 3 pm; NO HVAC this week.

No Steam / No Heat	No Hot Water	Boiler Delivery	Hot Water Returns	Heating Sys Active	Building Complete
May 19	May 19	June 29	August 17	August 31*	Sept. 29

**\*Heating will be possible, but commissioning and testing will go on through September.**

C. Impacts:

- No heat and no hot water as noted above.
- Gas piping will run from the east side of the building into the center of the building and up from the first floor to the third floor. As a result there will be some work in the main lobby area on the east side of the building.
- No AC and electric as noted above



**Science:**

**A. Next week:**

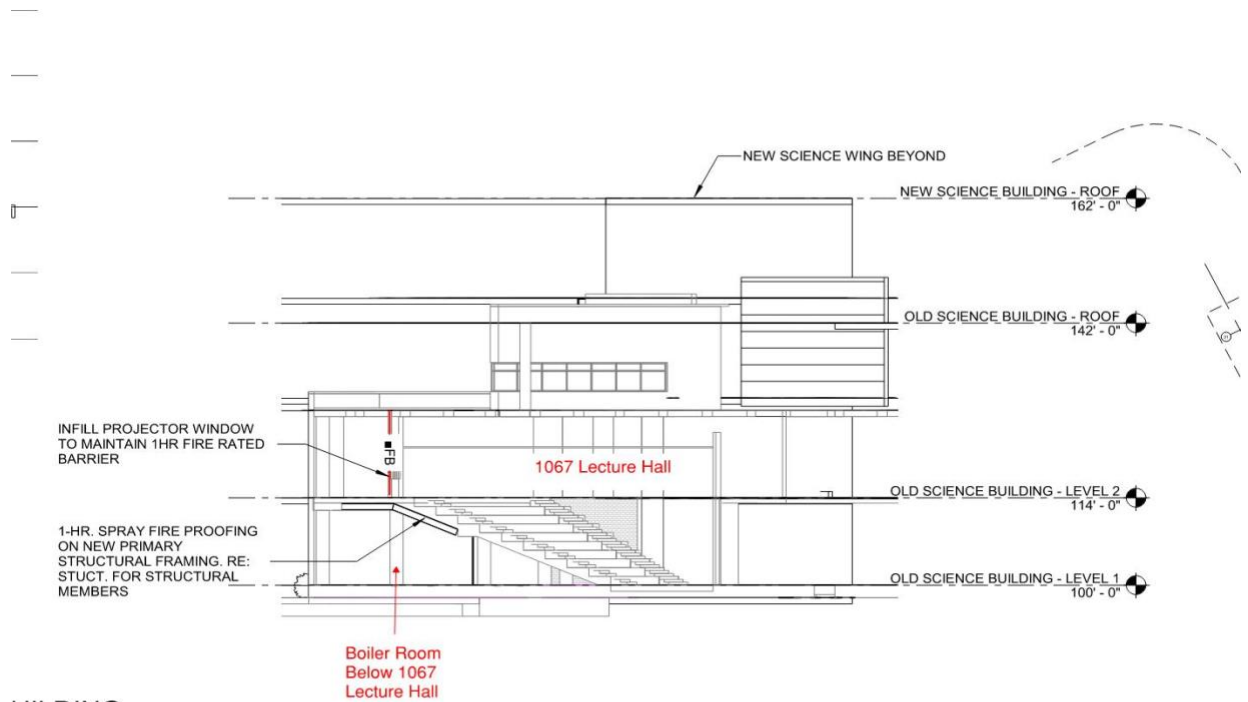
- Exterior trenching between wings of building continues; Will effect ingress/egress from the north to the main atrium butterfly area. Way finding signage showing entry/exits and barriers will be installed at doors and hallways.
- West wing north hallway corridor piping complete; build back of hallway underway.
- Flues over 1067 Projection Booth to be installed over next 2 weeks.
- Continue installation of Boilers, piping and equipment in the Mechanical Room.
- Install exterior stairs for additional exit out of Mechanical room.
- Continue install of the ceiling grid in the corridor shown below.
- Begin replacing ceilings in gender neutral bathrooms

**B. Upcoming:**

- Beginning planning and coordination of basement work relating to Vivarium and washing cage.

No Steam / No Heat	No Hot Water	Boiler Delivery		Hot Water Returns	Heating Sys Active	Building Complete
June 4	May 26	June 10		August 17	August 31*	Sept. 29
<p>Note: Vivarium 180 degree water need will NOT be affected one heat exchanger will be intact and not be removed until boilers are operational.</p>						

\*Heating will be possible, but commissioning and testing will go on through September.



BUILDING -  
COMPLIANCE  
EL 01

5 CODE COMPLIANCE SECTION  
1/16" = 1'-0"


ROOM - 1067A / A06;  
PROJECTION RM / P  
SCOPE:  
CONVERT PROJECT  
MECHANICAL SHAFT

C. Impacts:


- The Science air handling unit has been shut down that provides tempered air to the 1067 Lecture Hall.
- No heat and no hot water as noted above.
- North corridor of Old Science will be under construction to allow pipe installation until August 7.
- Hot water piping from Old Science to New Science will cause the main entrance on the north side of the building to be closed thru approximately August 14.
- Two Gender Neutral Restrooms on 1<sup>st</sup> Floor are now off line until August 7.
- Lots and lots of noisy work outside and surrounding the projection booth.





# SCIENCE PUBLIC SAFETY BARRIER AND WAYFINDING PLAN 7-6 TO 8-14


 = AREA NOT ACCESSIBLE TO PUBLIC 7-6 TO 8-14

 = 4' SAFETY PANEL BARRIER WITH SIGN "HALLWAY CLOSED - DETOUR" WITH DIRECTIONAL ARROW

 = 6' CHAIN LINK FENCE WITH EMERGENCY EGRESS SIGNAGE AND ARROWS AS NEEDED

 = PUBLIC ACCESS ROUTE

 = EMERGENCY EXIT ROUTE (OPEN TO PUBLIC ONLY IN EMERGENCIES)

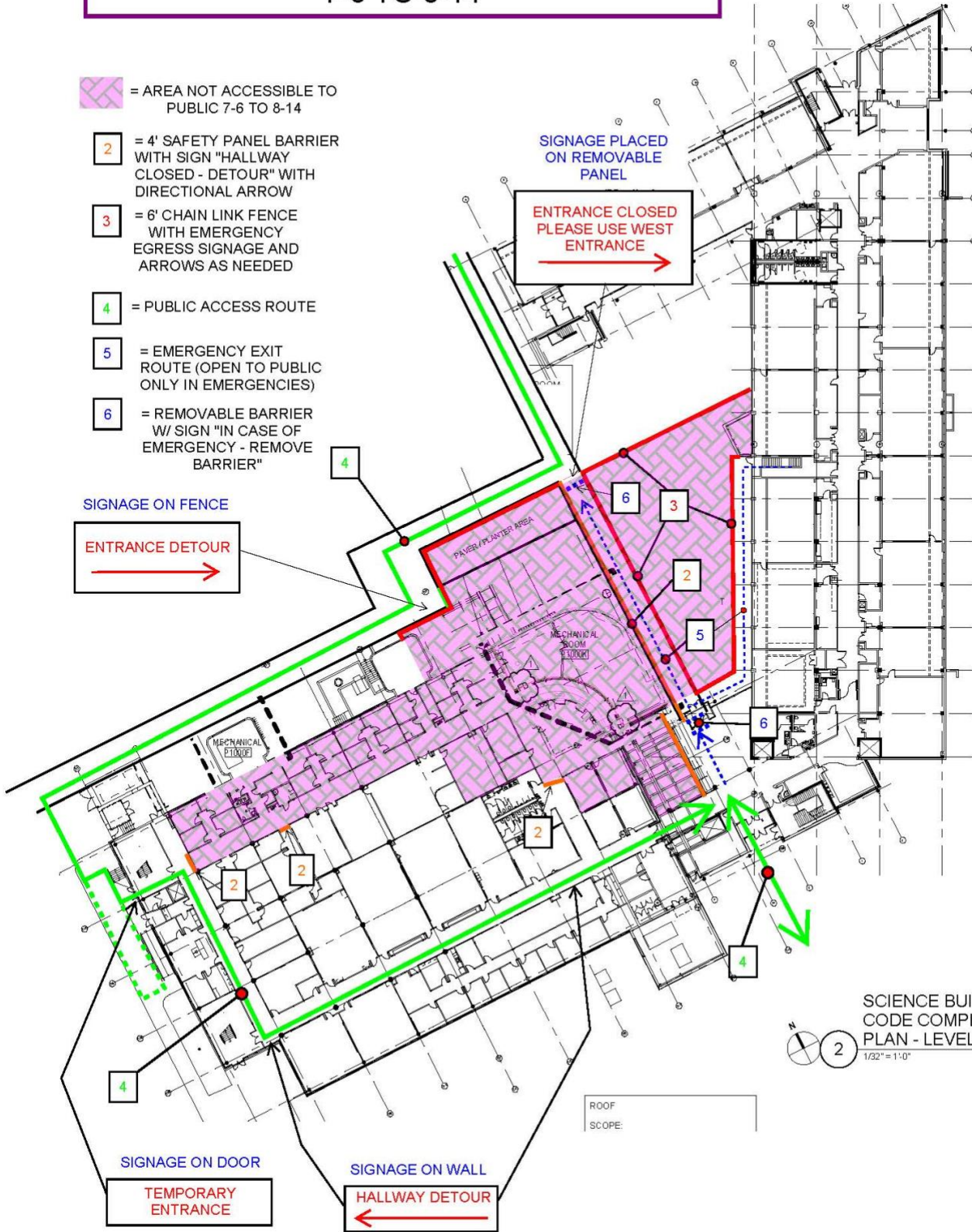
 = REMOVABLE BARRIER W/ SIGN "IN CASE OF EMERGENCY - REMOVE BARRIER"

SIGNAGE ON FENCE

ENTRANCE DETOUR  


SIGNAGE PLACED ON REMOVABLE PANEL

ENTRANCE CLOSED PLEASE USE WEST ENTRANCE  

INFILL PROJECT TO MAINTAIN BARRIER

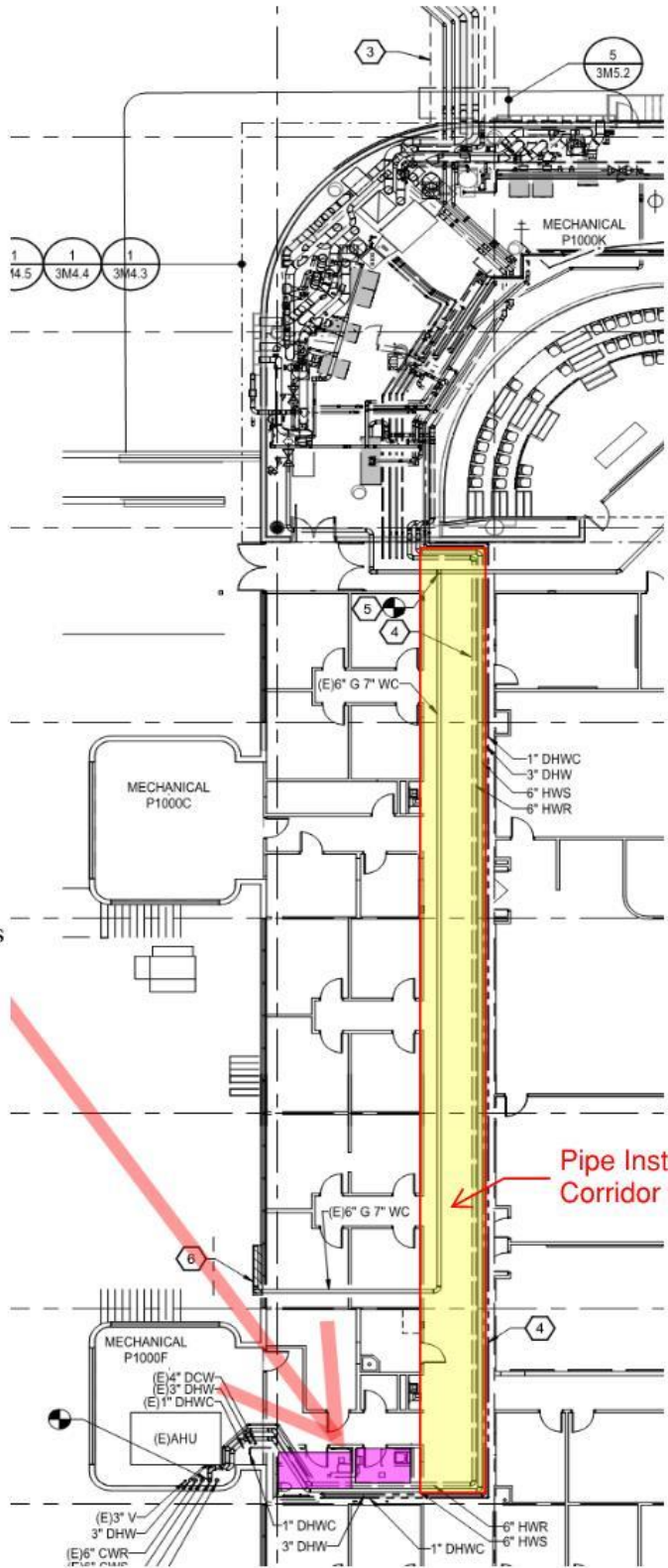
1-HR. SPRAY F ON NEW PRIM STRUCT. FOR S MEMBERS

SCIENCE BUILDING -  
CODE COMPLIANCE  
PLAN - LEVEL 01



1/32" = 1'-0"

ROOF SCOPE:



Gender Neutral Restrooms

Pipe Installation in Corridor Ceiling